

## DENTAL CHAIR A2



### Configurations:

- Flight Torch LED Light
- 2X 3-way syringes, each at doctor and assistant side.
- 3X four-hole handpiece tubing with coupler 2XHigh, 1XLow].
- 1X High-volume Evacuator (HVE) and 1X Saliva Ejector.
- 1X Foot controls for handpieces
- 1X Handpiece holder for scaler
- Ceramic spitton bowl



**\$8964**

#A2

## FLIGHT - CLAVE 23



**\$5500**

#A9002-23

- Double door protection system prevents the cycle from starting if the door is not correctly locked. This system also prevents the door from opening if the pressure inside the chamber is not equal to atmospheric pressure outside the chamber.
- Pressure safety valve prevents over pressure in the chamber and steam generator.

## FLIGHT - CLAVE 16



**\$4500**

#A9001-16

- The power is automatically cut if a short circuit or electrical fault occurs.
- Able to detect and identify the exact cause of any problem, and to issue a specific error code to the operator.
- Water level main switch in the main tank controlling the min and max water level

## Plastvac P7

A powerful motor generates the vacuum automatically at the instant of conformation. More practical!



### PRACTICAL AND EASY TO USE

- Unique heating system (carbon fiber resistance) makes the plasticizing process faster.
- Unique rotative sheet support, allows heating both sides of the sheets (uniform heating).
- Double sided cast rack, tray for bead and flat surface facilitates the cast removal and finishing.
- Perfect reproduction of the cast.



**FAST & VERSATILE**

**\$499**

#AP070314

**THE MOST POWERFUL MOTOR ON THE MARKET**

## Magnifying Lens

Light, practical and high visual performance, the magnifying lens is indispensable to enhance visualization in direct and/or indirect procedures.

- Ophthalmic lenses with 2.5 or 3.5x magnification.



Special  
**\$34<sup>95</sup>**

Reg. \$44.95

#Magna2  
2,5 X

#Magna3  
3,5 X

## Hydraulic Press



**MESTRA®**

The MESTRA hydraulic laboratory press is sturdy and pleasing to the eye. It is simple and easy to handle, and the latest trends in new materials have been applied to its construction. Its oil-hydraulic system is designed so that the oil cannot escape from the chamber.



#030350

**FREE CLAMP!**

\*with purchase



#030380

Special  
**\$935** Reg. \$995  
Plus FREE Clamp!

**TOTAL SAVINGS  
OF \$125.00**

## Mini polishing box "Gorbea"

Complete with LED lighting, suction circuit attachable to an external aspiration system (not included), trays for pumice, protection screens, electric protection against unexpected start-ups, etc.

- Its reduced size allows to place it anywhere
- The set includes the polisher and the box

Special  
**\$695**  
Reg. \$730

**NEW!**



#080508

Break Resistant, No Distortion

# ROCKWax

PROFESSIONAL  
**SNOW ROCK**  
DENTURE SYSTEM™

## Rock Solid Baseplate Wax

### The Ultimate Light Cure Baseplate Replacement

- Advancement in firmness and strength without breakage
- No distortion in mouth temperatures
- Chemically bonds teeth and wax rim to baseplate, no separation
- No waiting time, cures instantly in cold water
- No baseplate grinding time, easily re-formable
- No tooth grinding time, full teeth height can sink in
- Will not lose thickness when pressed
- Easily flushed out during boil-out process

**\$125<sup>00</sup>**  
/BOX



## Digital Water Bath

The Digital Water Bath is a digitally controlled unit that maintains temperatures in a range of 32°C to 80°C (89.6 °F to 176 °F) to soften a variety of wax or compound materials.



#05350

**FREE BOX of Rock Wax with the purchase of a Water Bath!**

**\$850**



## Reline Jig (Spring Type)



**\$54<sup>95</sup>**  
#02772

## Labo-Mate 80 Articulator

Magnetic split cast insures removing and exact setting with lateral excursions.

**6+1**



**\$44<sup>95</sup>**  
#02030





## Pouring Dental Flask

Specially designed for the "Resin Pouring Technique". Working table with the central magnet. Up cover for the pouring and filling with jelly/silicone. Side holes for the resin pouring. Pierced case for the steam cleaning of teeth. Supplied with magnet and stainless steel cutting tube.

Inside dimensions: 105 x 80 x 50mm



**MESTRA®**

**\$115**

#020202



## Lucitone HIPA - High Impact Pour Acrylic

Lucitone® HIPA is a high impact pourable acrylic denture base. It is the first pourable acrylic denture base on the market to exceed both of the required ISO standards for improved impact resistance. Lucitone HIPA was introduced in the United States in January and launched globally at the IDS Meeting in Cologne.



High Impact  
**POUR ACRYLIC**  
that can handle the stress

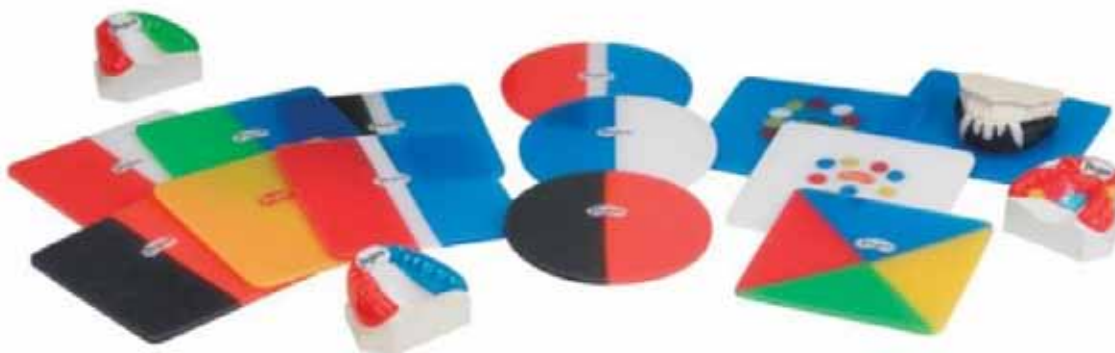
**Call us for  
pricing!**



## Keystone Proform Mouthguards

**3+1**

**keystone**  
industries



# VITAPAN EXCELL®

Natural shape with shade accuracy and brilliant play of light!



**#SHADEACCURACY #LIGHTDYNAMICS #PERFECTSHAPE**

Featuring lifelike tooth moulds with golden proportions, VITAPAN EXCELL sets new standards in anterior denture teeth by delivering harmonious shade progression

and surface texture with natural light transmission. For highly esthetic full, partial or implant-retained dentures, choose VITAPAN EXCELL.

[vitanorthamerica.com/vitapanexcell](http://vitanorthamerica.com/vitapanexcell)

**VITA – perfect match.**

# VITA

© 2017 VITA North America. VITAPAN Excell is a registered trademark of VITA Zahnfabrik.

## COBRA 50µm, white

- Mildly abrasive
- Oxide removal/deflasking
- Frame preparation (precious/non-precious metals)
- Surface conditioning (porcelain/acrylic)
- Preparation for soldering
- Surface conditioning of denture acrylics
- Highly effective in the vario jet recyclable blasting unit.

Special  
**\$146<sup>00</sup>**  
Reg.\$175.90

1594-2220 (20kg)



## Genius Brushes

Sizes: 2, 4, 6 or 8



1715 0004  
1715 0008

and/or

**Buy 2 Brushes  
get 1 FREE**

**Buy 1 Set get  
a FREE Brush**

1715 0000  
1715 0002

## Dynex Brilliant Discs



**Buy 3 Packages  
get 1 FREE!**

**56-2520** 0.25 x 20mm (10pc)  
**57-2526** 0.26 x 25mm (20pc)  
**57-0322** 0.3 x 22mm Small (20pc)  
**57-0540** 0.5 x 40mm Medium (20pc)  
**57-1040** 1.0 x 40mm Large (20pc)

## Jacket Grips



1105-0300

**\$81<sup>80</sup>**

**2+1**

## Layart Porcelain Trays

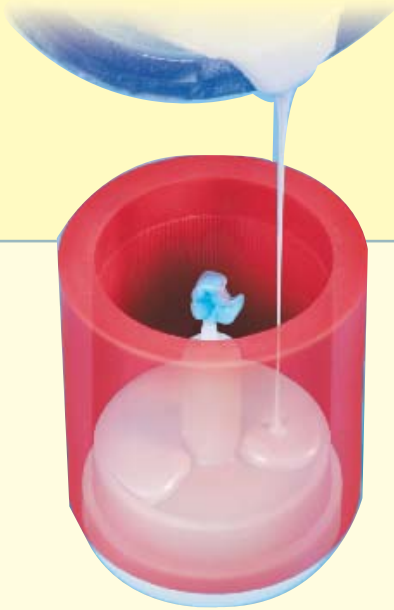


1725-1000

**Buy any Tray and get a custom  
set of Layart style Set:  
(#2, Opaque & Colour brush)**

# Brevest Ceram Speed

Brevest ceram speed is a special investment for all pressed ceramic systems. It is suitable for stains and layering technique.



**RISK FREE TRIAL OFFER!**  
Purchase 50 x 100g Kit  
Receive a FREE Starter Kit!

**If you are not satisfied  
simply return 50 x 100g Kit  
for Full Refund!**



Precision-fit objects are ensured by careful devesting with a blasting pressure of 2 to 4 bar.

The fine-grained consistency and exact concentration control allow dental technicians to use Brevest ceram Speed as investment material for stains and the layering technique.



Brevest ceram Speed features low reactivity to pressed ceramics at any temperature.



Aesthetic pressed inlays and all-ceramic crowns are obtained.

**Starter Assortment Kit**  
5 bags, 100 g each  
Brevest ceram Speed  
150 ml Bresol Speed  
Order No. 570 OPSO 5

**\$24<sup>50</sup>**



**Brevest Ceram Speed (Powder)**  
50 bags, 100 g each  
Order No. 570 OOPS 5

**\$129<sup>95</sup>**

**Bresol Speed** **\$35<sup>85</sup>**  
1000 ml  
Order No. 520 000S 1 (Liquid)

**Bresol Speed** **\$165<sup>00</sup>**  
5000 ml  
Order No. 520 000S 5 (Liquid)



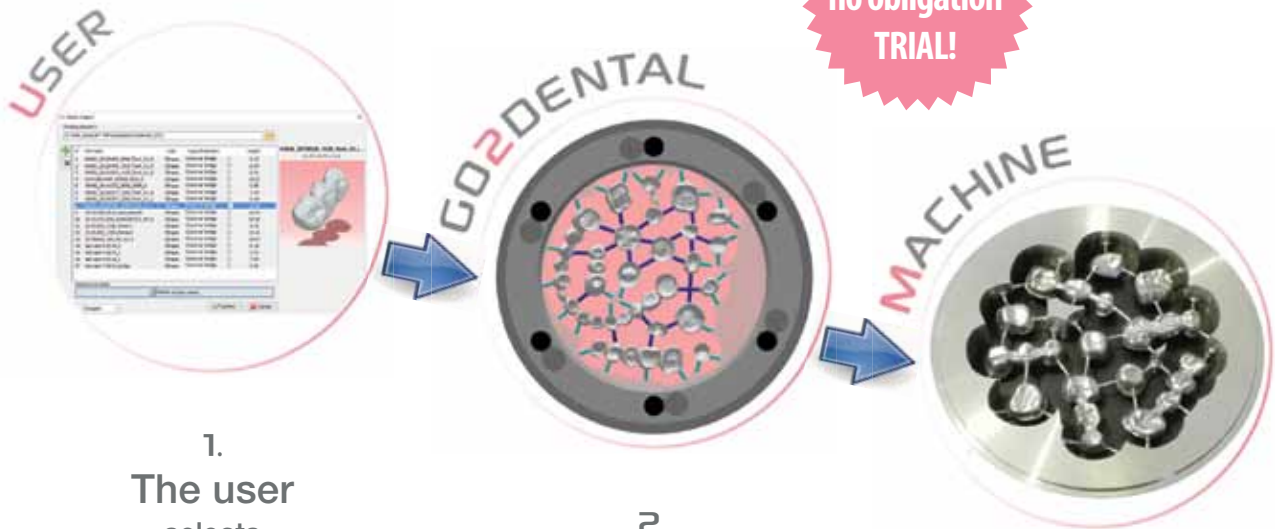
## FULLY AUTOMATIZED PROCESS

GO2dental brings automatization to the next level.

Whether for discs or pins, GO2dental brings automatization to the next level and lets dental technicians focus on their value added job.

Thanks to this fully automatized process :

**15 Day FREE  
no obligation  
TRIAL!**



1.  
**The user**  
selects  
several STL files  
and the stock

2.  
**GO2dental**  
does the rest :  
- it places elements  
in the discs or pins,  
- it puts the sprues (connectors),  
- it calculates the toolpaths.

3.  
NC File is then ready  
to be run  
**on the machine**

## BETTER MANAGEMENT OF USED DISCS



GO2dental allows the user to register used discs in order to machine the material left at a later time, for a better management of inventory and cost savings.

## ANGULATED SCREW CHANNEL MANAGEMENT



Automatic recognition of angulated holes for an optimal quality of your in-house implant production





# Why print models when you can mill them?

Milled models are at least as accurate as printed models.

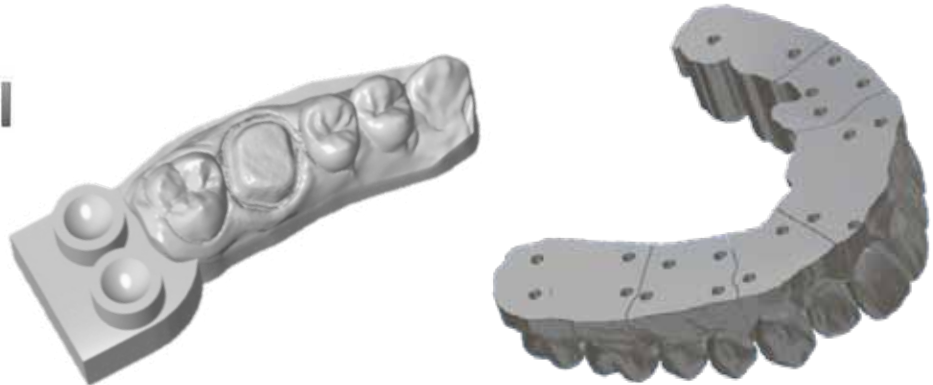
If you have a dental mill you should be able to MILL models, but your CAM software probably won't let you.

**GO2Dental** CAM allows anyone with an open platform 5-axis milling machine to print accurate and fully functional crown and bridge and implant models of all types.

**GO2Dental** CAM is available for a low monthly fee or on a "per click" basis, and can be tried for FREE for 15 days with no obligation so you can see for yourself how well model milling works.

For more information please contact **Dominic Babinski** at **800-268-4442**  
or via email at [dombabinski@centraldentalltd.com](mailto:dombabinski@centraldentalltd.com)

**GO2dental**



## Plaster Discs for Model Milling

Thinking of milling models? Affordable plaster discs from **Snow Rock** will do the trick!  
Available in 98.5mm diameter and three thicknesses:

20mm - \$17  
25mm - \$20  
30mm - \$23

PROFESSIONAL  
**SNOW ROCK**  
DENTURE SYSTEM™



**WARNING:** Very few dental mill CAM software products will accommodate model milling (see above). Talk to us first before you buy our plaster discs in order to avoid disappointment and frustration!

# Ivoclar Vivadent REMOVABLE

*More than dentures.*



## IvoBase®

Precision Press Processing.

The fully automated IvoBase precision press system compensates for acrylic shrinkage as it cures. The result is a denture base with outstanding accuracy, density and strength. IvoBase is an integral part of the Ivoclar Vivadent Removable System designed to help you process with precision.

Visit [Ivoclarvivadent.com/IvoBase](http://Ivoclarvivadent.com/IvoBase) to learn more!

**20%  
OFF**

**IvoBase®  
Injection System**

**BUY 1 IvoBase System  
RECEIVE 20% off\***

New Price: **\$9,201.19**

628518EU - IvoBase Injector 100-240V

**15%  
OFF**

**IvoBase®  
Accessories**

**BUY any IvoBase accessory  
RECEIVE 15% off\***

*\*Does not include Acrylic Kits*

*Contact your Central Dental representative today!*

**ivoclarvivadent.com**  
EXPLORE SHOP LEARN

\*Valid in Canada only. All orders must be placed through Central Dental Ltd. Qualifying purchases must appear on a single invoice and must be made between 07/01/2017 - 09/30/2017. Requests for FREE GOODS must be received no later than 10/31/2017, to Attn: Central Dental Q3 Removable - Free Goods via Email: [customerservice.ca@ivoclarvivadent.com](mailto:customerservice.ca@ivoclarvivadent.com) or Fax: 1-877-238-5711. Allow 4 to 8 weeks for free goods. These specials cannot be combined with any other offer or rebate program. Ivoclar Vivadent reserves the right to modify or cancel these promotions at any time.  
©2017 Ivoclar Vivadent, Inc. Ivoclar Vivadent and IvoBase are registered trademarks of Ivoclar Vivadent, Inc.

**ivoclar  
vivadent®**  
passion vision innovation

## RUTHINIUM NEW User Mould Guides



**SUPER  
SPECIAL  
PROMOTION!**

### NEW USER GUIDE

16 X 6 Anterior  
16 X 8 Posterior

- High impact double cross link Polymer
- Abrasive resistant
- Exceptional hardness
- Excellent resistance to plaque

**AcryPlus**  
*We take care of your smile.*

Promo price  
Less 50% only!

**Special**  
**\$417<sup>44</sup>**

Reg. Price: \$834.88

## Acry-Tray

**Special**  
**\$59<sup>95</sup>**

Reg. Price: \$69.95



**SAVE  
\$10**

0800001

## Sunburst Micro-motor



**70**  
SPECIAL  
Central Dental

**SAVE  
\$100**

P-900/X-99L

**Special**  
**\$325<sup>00</sup>**

Reg. Price: \$425.00

## Bredent Diamond Disc

Diagonal toothing and abrasive diamond for a high cutting efficiency. The cooling effect of the saw toothing with the abrasive diamond graining creates ideal conditions for rapid, concerted finishing of synthetic and ceramic veneers.



**SAVE  
\$20**

**Special**  
**\$31<sup>24</sup>**

Reg. Price: \$51.24

34000130

16mm x 0.25mm

## ROPAK/Kompaktopaker UV

The ready-to-use alternative for convenient coating of CoCr objects.

Apply Ropak Kompaktopaker with the integrated brush directly onto the clean metal surface.



Reg. \$139.29  
**\$99<sup>50</sup>**

Ropak Kompaktopaker  
(Pink) 20ML  
54000133

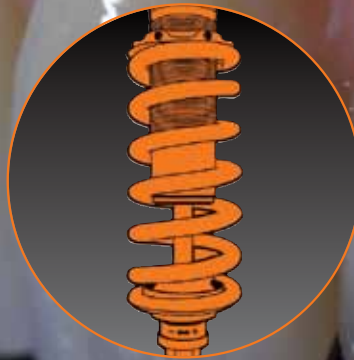
Reg. \$76.57  
**\$56<sup>00</sup>**

Kompaktopaker Zahnfarben  
(Tooth Colour) 10ML  
54000105

**30%  
OFF**

neo.lign®

# Like having a shock absorber on every implant



Increased biting forces from implant-supported and fixed hybrid dentures create a predicament – the need for an acrylic tooth that is fracture resistant and yet will have enough shock absorbing qualities to protect from progressive bone loss around the implant.

By using specially processed high impact PMMA and the addition of ceramic particles **neo.lign®** teeth combine best in class fracture resistance of 140 MPa and a super low modulus of elasticity of 3,000 MPa, making them at once very strong and highly shock absorbing.



bredent  
group

*Oh by the way, they look awesome too!*

For more information call Dent-line of Canada, the exclusive Canadian distributor for Bredent products.



dent-line of canada inc.  
a division of Central Dental Ltd.

**1.800.250.5111**