

NOW IN STOCK!



M93

M93 workstation - RAL 5014 & RAL 7042; compact top, suction, gas, air, regular lighting.
*Colours are approximate.

\$4695 *as shown



M82A

M82A workstation - RAL 5014 & RAL 7042; compact top, suction, gas, air, regular lighting.
*Colours are approximate.

\$3645 *as shown

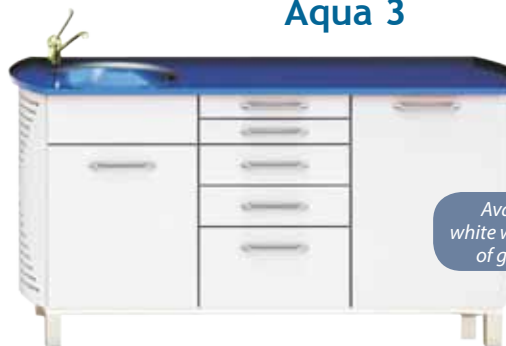
Plaster Benches



3- Plaster benches
RAL 5014 & RAL 7042;
LAB21-E2, LAB21-BB,
LAB21-GC.
*Colours are approximate.

\$4885 *as shown

Aqua 3



Available in white with a choice of glass tops.

AQUA - 3

- 56 x 166 x 89cm(h)
- 19mm glass, built-in sink
- Waste bin
- Long lever faucet & pop-up siphon
- Weight: 150 kg

\$3895
*as shown

- European Laboratory and Clinical Furniture Solutions.
- Durable – Steel with Oven-cured Electrostatic Paint Finish.
- Design - Wide array of colours for choice.
- Work Surface – Laminate, Hardwood, Synthetic Resin & Stainless Steel.
- Choice of Lights – Bendable Arms or Straight Fixed Position.
- Regulatory - ESA Approved (Electrical Only).
- Planning - 3-D CAD Drawings to Assist in Design.

Good Quality..Great Value!

Due to popular demand we are now stocking the models listed above in 2 RAL colours!
For custom orders please call.



Bibs

23-1210 Blue Pkg.(500)
23-1211 Green Pkg.(500)
23-1212 White Pkg.(500)
23-1213 Rose Pkg.(500)
23-1214 Yellow Pkg.(500)
12-1215 Lavender Pkg.(500)

\$23.95



Plastic Cups

30-5148b Blue 5 Oz. Pkg.(1000)
30-5148g Green 5 Oz. Pkg.(1000)
30-5148l Lavender 5 Oz. Pkg.(1000)
30-5148p Pink 5 Oz. Pkg.(1000)
30-5148w White 5 Oz. Pkg.(1000)
30-5148y Yellow 5 Oz. Pkg.(1000)

\$31.95

Soft Cracks

Soft reline wheels designed for trimming & finishing any soft material including silicones, mouthguard & acrylic materials.

2100UM-10

Pkg. of 10 with mandrel.

Special
\$23.95
Reg. \$28.95



Flexor Pre Polishers

Scotchbrite material for pre polishing soft reline and mouthguard materials. 7/8" diameter.

658125

Pkg. of 25

Special
\$36.95
Reg. \$44.70



Molloplast B

Silicone based heat cured permanently soft reline material. The industry standard. Used in new or existing dentures.



03000 Molloplast B 45gm **\$108**
03001 Molloplast B - 170gm **\$249**
03004 Primo For Molloplast 15ml **\$32.50**

Milkbite - Vps Bite Registration Material

Resistance - Free Bite registration with particularly light creamy, airy initial consistency Ice Cream aroma.

Special
\$54.95
Reg. \$59.95



03380
2 Cartridges with
12 Mixing tips & 12 Intra-oral tips

A7 Bio Art Articulator

Special
\$225.00
Reg. \$250.00

AAR60254



SAVE \$25

High Arch Bronze Articulator

Special
\$8.50
Reg. \$11.95

105015



Denture Baths



- Flip-top plastic denture bath with a snap lid.
- Economical option for dentures and other removable appliances.

9090120 Blue (1)
9090200 White (1)

Special
.70^c

***with imprint**
\$1.45
(250 minimum)

Writing: black, gold, blue or silver.

Dental Vault

A dental appliance storage container that can be used to clean and store retainers, night guards, snore guards, dentures and partials.

05585 Denturevault Dental Storage & Cleaning Container (1)



Special
\$7.99
Reg. \$8.95



Edenta Carbide Burs

5 + 1



**FREE PRODUCT WILL BE EQUAL OR LESSER VALUE*

Denture Brushes



00002 Pkg (50)

Special
\$56.95
Reg. \$65.95

Nu-Dent Denture Cleaner



64 cleanings per bottle
Cleans in less than 25 min.

943230



Only
\$3.95
Per Bottle

Purchase Case (48) Receive Free Point of Purchase Display & 50 pc Literature & 25 Samples (Limit 2 per customer)





Waxlectric II

Waxing-up is simple, precise and stress-free due to the accurately set, constant and evenly distributed temperature of the instrument tip. Huge saving in time because separate heating of the instrument and material is no longer required.

Special
\$399.00
Reg. \$446.50

2157-1000



Waxprofi

The Waxprofi produces improved prosthetic results more efficiently. Instruments and wax are no longer heated separately, resulting in distortion-free wax denture bases and a huge saving in time.

Special
\$320.00
Reg. \$349.50

1440-1000



Twister

The compact Twister vacuum mixer can be employed for all conventional casting and modelling materials used in dental technology. All mixing parameters are quickly and easily input. The high performance motor and high quality vacuum pump guarantee homogeneous and bubble-free mixing results for dental plasters, investments, and silicones.

Special
\$1635.00
Reg. \$1735.00

1826-0000



Basic Classic

Fine sandblasting unit with up to 2 tanks.

Special
\$995.00
Reg. \$1070.99

2947-4025



MT3

Wet trimmer

1808-1000

Special
\$899.00
Reg. \$980.00



Dustex Master

Dust and vapours are extracted directly where they originate: at the restoration. The tilt and slip resistant Dustex master plus protects the technician from splinters, dust and vapours. The sophisticated, ergonomic design and the armrests provide a comfortable working posture for fatigue-free work.

Special
\$585.00
Reg. \$629.40

2626-1105



Hotty LED

Wax dipping pots with a controllable working temperature for gently heating dipping waxes. High-grade wax components are heated without impairing the quality.

Special
\$285.00
Reg. \$386.25

1461-1000



Sympro

This cleaning device is a new development in the well-known pin cleaning technique. Its extraordinary efficiency results from the blend of the unit's characteristics, the specifically developed abrasive materials and the cleaning fluids. The fully automatic and highly efficient cleaning process doesn't take up any of your valuable resources for unpleasant tasks, that can however be offered as a value added service.

Special
\$915.00
Reg. \$989.00

6500-0050

Renfert Smart Pins

Narrow, short model pin
with optimum insertion into
metal sleeve.



366-2000 **\$57.00**

366-2100



\$59.00



\$116.00

for 1000 / of each



CD dent-line of canada inc.
a division of Central Dental Ltd.

Dowel Pins Bi-V-Pins

Narrow model pin with two dowel pins,
ideal for positioning in limited space.



328-2000

Special
\$195.00
Reg. \$228.25

Bi-Pin with Sleeve

Model pin with dual guidance for precise,
rotation-free positioning of the die.



326-2000
346-2000

Special
\$215.00
Reg. \$261.25

GEO Classic Waxes

GEO Classic modelling waxes are ideally suited to
additive waxing-up techniques. Their excellence lies
in the optimum properties of raw material used.



Special
\$18.95
Reg. \$20.30

497-0100 Beige

497-0200 Grey

497-0300 Mint Opaque

497-1100 Beige Transparent

497-1200 Blue Transparent

497-1300 Mint Transparent

Picosep

Thin, silicone based isolating
agent – specially developed for
wax-dipping techniques.



1552-0030

\$15.85

Ergo Wax Set Instruments

ERGO wax instruments are characterised
by the wide variety of applications for
which they can be employed and by
their individual adaptability. The modern
handle design is different for each set,
thus making them unique.



1034-2001
1034-2002
1034-2003
1034-2004
1034-2005

\$28.95
Each

Giflex TR



Giflex-TR is a disc that features diamond-coating on both sides and is particularly suitable for cutting plaster and resin dies. Calculated chip spaces in the area of the diamond coating ensure quick removal of the grinding dust and increase the cutting performance of the disc. Giflex-TR allows quick, smooth and reliable cutting even of very hard plaster and resin. Troublesome chattering and jamming of the disc is avoided.

25mm 34000025
\$47.95 Reg. \$59.47

37mm 34000020
\$59.95 Reg. \$74.43

30mm 34000120
\$54.95 Reg. \$68.44

45mm 34000110
\$66.95 Reg. \$84.15

Qu-Resin



Quick-setting, self-curing denture repair resin based on diacrylate for intraoral and extraoral (direct and indirect) use.

The perfect material when it comes to speed in practices or laboratories. Qu-resin pink and Qu-resin dentin for standard processing in the laboratory and for direct use in situ. Qu-resin covers a wide indication range thanks to simple handling, quick setting and two colors (pink and dentin).

PINK KIT 54001161
\$125.94 Reg. \$139.94

DENTIN CARTRIDGE 54001166
\$99.00 Reg. \$110.00

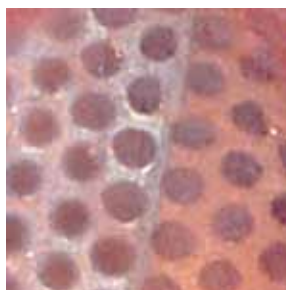
DENTIN KIT 54001162
\$125.94 Reg. \$139.94

QU-CONNECTOR 54001163
\$26.25 Reg. \$29.17

PINK CARTRIDGE 54001165
\$99.00 Reg. \$110.00

ROPAK/KOMPAKTOPAKER UV

Esthetics beyond compare
 Pink opaque shows perfection.



Ropak Kompaktopaker (Pink) 20ML
 54000133
\$99.50 Reg. \$125.29

Kompaktopaker Zahnfarben (Tooth Colour) 10ML
 54000105
\$59.95 Reg. \$66.57

visio.lign

Coming Soon
to Canada!



Composite Filled
PMMA Veneer System

 **dent-line of canada inc.**
a division of Central Dental Ltd.

bredent group



NEW! GC FUJIROCK

IMPROVED TYPE IV DIE STONE

4+1



TOUCH of GENIUS™

- Easy to mix - Flows well yet runs less from the impression when pouring
- Low setting expansion (< 0.08) provides accurate models with smooth surfaces
- Increased compressive strength results in no fractures or chipping during removal from impression
- Available in Golden Brown and Alabaster Ivory

Your Favorite Material, Now in Your Favorite 50lb BULK Size



Buy 1 NATURE-CRYL® SUPER HI IMPACT 25lb Powder,
Get 4 NATURE-CRYL® SUPER HI IMPACT 32oz Liquids FREE!*

promo code 1841

Buy 1 NATURE-CRYL® MC 5lb Powder,
Get 1 NATURE-CRYL® MC 32oz Liquid FREE!*

promo code 1840

Buy 1 NATURE-CRYL® SUPER HI IMPACT 5lb Powder,
Get 1 NATURE-CRYL® SUPER HI IMPACT 32oz Liquid FREE!*

promo code 1842

Buy 1 NATURE-CRYL® SUPER HI IMPACT 25lb Powder
and 1 NATURE-CRYL® SUPER HI IMPACT 32oz Liquid,
Get 1 GRADIA® gum shades Starter Kit FREE!*

promo code 1839

DENTURE BASE RESINS

Buy 2 GC Initial™ MC Basic, Basic Plus or Standard Sets,
Get 1 GC Initial™ MC Advanced Set FREE!*

promo code 1843

Buy 1 GC Initial™ Ti Basic Set, Get 1 GC Initial™
Ti 4g Bonder or GC Initial™ Ti Bonder Intro Kit FREE!*

promo code 1834

Buy 4 GC Initial™ IQ/Effect Metal Ingots, Get 1 FREE!*

promo code 1844

Buy 5 GC Initial™ IQ/Effect Zircon Ingots, Get 1 FREE!*

promo code 1845

Buy 4 GC Initial™ Refills, Get 1 FREE!*

promo code 1853 • excludes GC Initial™ IQ - except Power Frame Modifiers

CERAMICS

Zetalabor & Titanium Putty



3+1

ANY SIZE!

1+1

Hi Trays



Elite HD

4+1



Alginates

5+1



Elite Double

2+1

ANY SIZE!



Gingifast

2+1



Occlufast

2+1



Platinum Putty

2+1

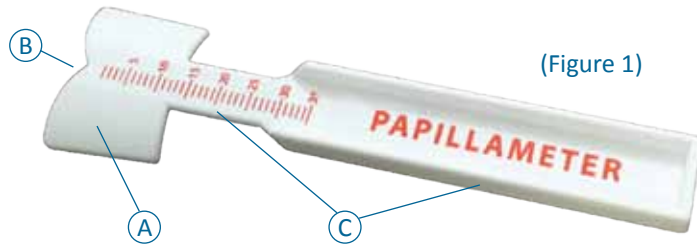


Technical Corner

Papillameter

A Significant Tool for Esthetic Control!

The Papillameter (Figure 1) is an important measuring device used by the dentist to gain more accurate, personalized esthetic results in denture and denture related implant cases. The Papillameter takes the measurement of the length of your patient's upper lip. This enables the dental technician to establish the anterior length of the Esthetic Control Base, simply, accurately and individually for each patient.

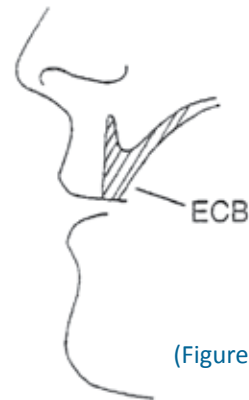


(Figure 1)

It consists of:

- A. Vestibule Shield
- B. Incisive Papilla Rest
- C. Vertical handle for measuring lip length

DEFINITION - ESTHETIC CONTROL BASE (ECB): A precisely constructed wax rim fixed to an upper base, used for establishing several esthetic and physiologic parameters related to the overall esthetic requirements of each patient. It helps you to establish length, labial position, mid line, smile line, low lip line, buccal corridor as well as vertical and horizontal dimensions. The ECB ultimately determines the proper lip support, tooth length and the right labial inclination. (Figure 2)



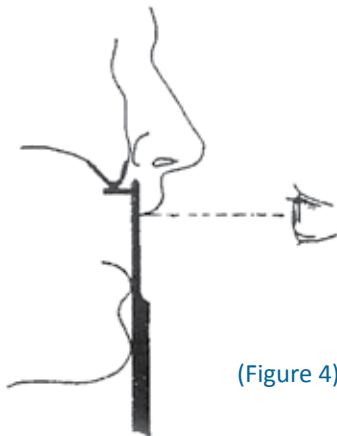
(Figure 2)

IMPORTANT: You will never get the information in a conventional bite block that you will get into an ECB using the Papillameter and Alameter.

INSTRUCTIONS FOR USE

1) Have the patient standing or sitting upright for this procedure. (Figure 3)

2) Holding the Papillameter perpendicular to the floor place the Incisive Papilla Rest (B) on the incisive papilla. Make sure the lip is at it's full rest position and not pushed or pulled upwards or outwards by the Papillameter. (Figure 4)

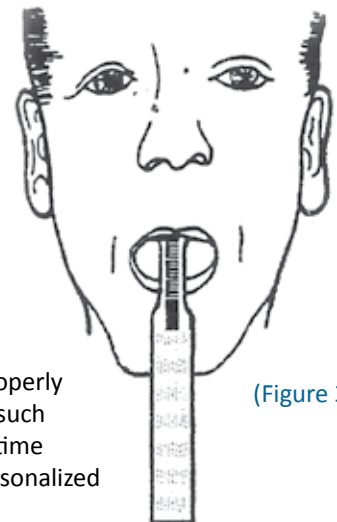


(Figure 4)

3) Read the measurement with eyes on a level with the low lip line. (Figure 4)

4) Now specify the Papillameter reading on the Laboratory Authorization Form.

5) Make sure your laboratory knows exactly how to apply the guidelines to build an ECB correctly. Trained and certified technicians, once given the needed information, will be able to properly construct the Esthetic Control Base in such a way as to save you substantial chair time while improving tremendously the personalized esthetic for each of your patients.



(Figure 3)

Ask for PTC's high quality denture materials and instruments. The "Creating Natural Dentures System" has helped thousands of dentists and dental laboratories in constructing the ultimate in denture and denture-implants esthetics.

Multi-functional Bench Top Polishing System

Complete bench top polishing system comes with a heavy gauge, stainless steel, powder coated cabinet, two suction motors & cartridge filters, two fluorescent lights, two dust collection trays, two insert pans and a 26A Red Wing Polishing lathe.

#575 Bench Top Polishing System - (With Lathe) **\$1750**

\$1257

#575-0 Bench Top Polishing System - (No Lathe)



Quick Chuck & Redwing Lathe **\$799.00**



- A full 1/2 HP, 1725/3450 rpm bench top lathe.
- High quality, dependable & affordable.

#26A Low base(4.5" high for grinding) **\$349.00**
#26 High base(6" high for polishing)

WINDER RESEARCH Precise Indicating Material



Special
\$144.00
Reg. \$162.00
WR602 12oz

Special
\$39.95
Reg. \$45.80
WR600 3oz

LANG - Tempo

A short term, very soft reline for temporary cushion treatment. Comfortable for up to 3 months. Treats and tones sore and painfully tender gingival and ridge areas. Bland, pleasant tasting powder and liquid combination. Ideal as a functional impression material. Available in Clear and Pink.



Special
\$129.00
Reg. \$144.00

1034
1 lb pkg. with liquid.

Talladium is moving forward in the milling era!

These yttria-stabilized zirconia are manufactured using the highest quality powder offering amazing translucency like no other! Talladium's blocks and discs are isostatically cold pressed and partially sintered producing the highest quality fit available for single units up to full frameworks with absolutely no distortion. Talladium offers 18 different blocks and 13 different discs to choose from. Available for the Sirona InLab, KaVo Everest, Weiland, DentMill and Zakonzahn machine.



Discs starting from
\$149.00



Bring your next masterpiece to life with Candulor™



Three choices
to enhance
your creativity

- **PhysioSet™ CT** Ceramic Teeth for the most natural looking appearance and highest durability, making porcelain an outstanding choice for full dentures.
- **PhysioSet™ TCR** Twin Crosslinked Resin Teeth are premium resin denture teeth with superior reliability as their hallmark.
- **PhysioStar® NFC+** NanoFilledComposite Teeth are an ideal solution for all indications due to their natural esthetics and resistance to abrasion.



The Briars Golf Club

127 Hedge Road, Sutton West, ON L0E 1R0

Friday, June 6th, 2014 @ 1pm Tee-off

The Briars Golf Club is located just one hour from Toronto on the southern shores of Lake Simcoe. As you wind your way along historic Hedge Road, you immediately feel relaxed and understand the allure of this location. Two Canadian design legends have combined to bring you a delightful dose of golf at its best. Stanley Thompson carved out the original nine holes in 1922. Robbie Robinson integrated a second nine in 1971, creating a seamless routing that may look fairly innocuous on paper, but will be appreciated for its subtle charms. The Briars is the epitome of the old-style course.

6th ANNUAL SPRING CLASSIC GOLF TOURNAMENT

To Register Call: 1.800.268.4442

\$140/person

**Includes 18 Holes,
Cart, Dinner, Prizes & More!*

