



Introducing...

# The Total Prosthetic Solution

PREPARE

REGISTER

SET UP

PROCESS

FINISH

## AccuDent<sup>®</sup> XD

Alginate Impression System

**NEW**

The next generation alginate impression system.



**Trial Kit Special**

**ONLY \$148<sup>50</sup>**



## Vivodent<sup>®</sup> S PE

The distinctive tooth for sophisticated needs

**NEW**

- More individuality: 15 anterior moulds
- Lifelike effect: exclusive PE layering
- Universal indication: highly cross-linked DCL material



## IvoBase<sup>®</sup> System

Precision Press Processing

- "All-in-one" injector, with quick and easy settings.
- Controlled polymerization shrinkage for optimal accuracy of fit.
- No water and compressed air connection necessary.
- Compact, modern and ergonomic design; requires only a small space.
- RMR key for a clear reduction of the residual monomer content design.



FOR A LIMITED TIME  
SPECIAL PRICE OF **\$9,201<sup>00</sup>**  
(20% OFF the regular price).

CONTACT YOUR SALES REPRESENTATIVE FOR MORE INFORMATION!



# BEAT THE FREEZE!



## Galaxy 2 Universal Investment



- Superior Quality
- Reliability
- Consistency
- Versatility

Special 3 Rate  
**\$179**  
 Reg. \$205.00

1404-2 - (Package of 144 x 60g. Pouches) or  
 1400-2X - (Package of 100 x 100g. Pouches)

## Microfine 1700 Investment

Talladium Microfine 1700 is the dental casting investment of choice for all crown & bridge gold, ceramic precious, semi-precious and non-precious.



Special 3 Rate  
**\$179**  
 Reg. \$205.00

1700-X - (Package of 144 x 60g. Pouches) or  
 1701-X - (Package of 100 x 90g. Pouches)

## Pala Lab Putty 90 - The high-precision A-Silicone for laboratory use

The addition-Pala Lab Putty has been specially developed for precise and fast work in dental laboratories.

### Advantages:

- Easy mixing with dosing spoons (1: 1)
- Fast setting time
- High detail reproduction (20 microns)
- Dimensionally stable (<0.05% after 24 h)
- Heat resistance (also in the pressure pot)
- High tear strength
- Can be combined with standard correction silicones

**Heraeus**



**3+1 FREE!**

66057432  
 (2 x 1.5 Kilo)

**\$152<sup>95</sup>**

66057433  
 (2 x 5 Kilo)

**\$379<sup>00</sup>**

## Harvest Appliance Box

- Heavy duty clear plastic provides easy viewing of contents
- Excellent way to protect valuable models, dentures, partials, diagnostic wax ups, splints and more..
- Pre-packaged with foam fillers

**\$198**  
 Pkg (100)

**HarvestDental**  
 LABORATORY PRODUCTS



# GO 2011 Speed - New superfast Gypsum and Alginate solvent with excellent cleaning power



Cleans contaminated objects such as impression trays, acrylic dentures, articulating plates, mixing bowls or instruments quickly and thoroughly.

## Advantages:

- Stubborn residues are dissolved quickly in a cleaning bath and even faster in an ultrasonic unit.
- A variety of materials can be completely cleaned away without requiring any pre-handling or the use of personnel resources.
- Ready-to-use solution in a handy canister
- Efficient removal of stubborn residues in a cleaning bath and even faster in an ultrasonic unit.
- Ready-to-use solution in a handy canister
- Works Great!



**\$68<sup>95</sup>**  
2012-0000

## Easyclean, Ultrasonic - The simplest method for perfect cleaning

### Function & Performance

Easyclean lives up to its name. It stands for easy, intensive and gentle ultrasonic cleaning using the latest state-of-the-art technology.

### Advantages

- Very good cleaning results using the optimally coordinated ultrasonic high-performance transducer system (37 kHz).
- Uniform cleaning intensity on large items based on permanent displacement of the pressure wave maximum zones (sweep function).
- Plus receive a FREE GO2011 Speed!



**SAVE \$182**

Special  
**\$1040<sup>00</sup>** Reg. \$1222.00  
1850-1000

### Yeti Die-Bloc

Yeti Die-Bloc is an economical, yet a high performing light cure blocking out material. It is suitable to be used with all spacers. Die Block Liquid comes in 2ml.



**SAVE \$10**

Liquid - 2ml (#1860388)

Special  
**\$44<sup>40</sup>**  
Reg. \$54.40

### Pressure Pot Hydraulic Water Press

Our Pressure Pot Hydraulic Water Press is used in creating high quality relines, repairs, splints, temporaries, and orthodontic appliances. The Pressure Pot Hydraulic Water Press guarantees a dense, super-smooth, color stable on any self-curing acrylic with just 10-15 p.s.i.

**\$340<sup>00</sup>**

#092135

**BONUS**

Receive a **FREE 1lb Diamond D Acrylic!**



### Palatinal Brush

The Palatinal Brush has a unique design that is ideal for polishing hard to reach palate area. The new designed brush if fitted on a tapered spindle and a plastic center with automatic centration. The brush is used with pumice for high shine.

**5+1 FREE!**

**\$23<sup>65</sup>**

#1670152



### Muslin Buffs

These Muslin Buffs are made of carefully selected material and each ply is a full cut. The uniform stitches will not pull out and long-lasting.



3" X 35 Ply (#1180140) Pkg.12

4" X 30 Ply (#1180160) Pkg.12

4" X 42 Ply (#1180170) Pkg.12

**Buy a Pkg of 12  
Receive 2 Buffs FREE!**

**equal or lesser value**

### Stainless Steel

#### Wire Clasps

These Stainless Steel Wire Clasps are anterior small. Items come in straight, left, and right. Available in 10/Pkg or 100/Pkg.

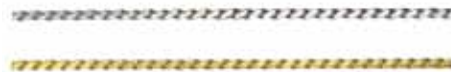


**5+1 FREE!**

(#1271160) + more...

### Strengtheners

These strengtheners are twisted, braided strips that are 3 -1/2" long. Available in 10/Pk or 100/Pk.



**5+1 FREE!**

Gold Plated  
10/pkg (#1800025)

Gold Plated  
100/pkg (#1800035)

Stainless Steel  
10/Pkg (#1810035)

Stainless Steel  
100/Pkg (#1810045)

### Wire Mesh

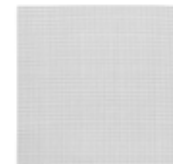
We have varieties to wire mesh to meet all demands. We have a Stainless mesh that is X-Fine and Med-Fine which are both 6"x6".



**5+1 FREE!**

Stainless Mesh, X-Fine,  
6" x 6" (#1810050)

Stainless Mesh, Med-Fine,  
6" x 6" (#1810060)



Gold Mesh,  
4" x 4" (#1810070)

**Euro Curing Unit**

Inexpensive, durable light curing unit with four bulbs for efficient curing.



**\$325<sup>00</sup>**  
#01050



**FREE (Box 50)  
AcryTray Lightcure  
Baseplate  
with purchase!  
\$69 Value!**

**Denture Bath with Liftout handle**

Denture Bath Soaks and Stores one full set of dentures. Features a lift-out drain cup. Keeps finger out of cleaning solution.



**\$1<sup>49</sup>**

#770-050-Blue  
#770-220-White

**AcryLux**

*We take care of your smile*

- Best value in the market for Three-Layer Tooth.
- Large selection of moulds  
37 Anterior & 8 Posterior  
New everyday Price of only **\$10.50** per Card.

3D View  
dent/neck



3D View  
enamel/neck



3D section of  
stratification



**NEW USER  
SPECIAL!**

\*Purchase 1 x 28  
with Mould Chart and  
Shade Guide for only

**\$24<sup>00</sup>**



**3 LAYERS**



\*Limit One Per Customer

## Harvest Z CAD Wax Press

A new, harmonious CAD/CAM wax family  
Synergizing digital and analog workflows.

Press for fit. Mill for profit.

The mission is elevated quality levels and workflow efficiency gains. Start with a premium CAD/CAM wax which mills clean, smooth and accurate.

**\$29<sup>95</sup>**

Available in 10,12, 14, 16,18, 20, 25mm Thickness  
Colours: Beige, Grey, Brown & White



## DFS Okklean Occlusion Scan Spray

Content: 75 ml (Incl. tube nozzle)

- For marking the contact points on prosthetic work and crowns
- Easy dosage of colour pigment film
- Application thickness depending on spraying time approx., 6 - 8 µ
- Spray the appropriate section at a distance of about 3 - 5cm
- Easily removable with a brush, on deeper materials remove with a steam-jet
- Insoluble in water or alcohol



**5+1  
FREE!**

**Best Value!**

**\$15<sup>85</sup>**

#11147-White  
#11140-Green

## RENFERT Waxlectric II

Advantages

- Easy temperature control via a potentiometer
- Separately adjustable temperature with Waxlectric light II
- Compact, ergonomic design



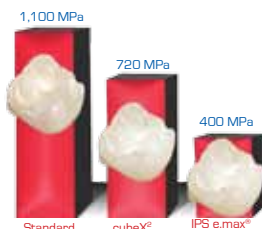
**\$549<sup>00</sup>**  
2157-1000



Receive a **FREE**  
NFL Jersey with  
the purchase of  
the Waxlectric II

## cubeX<sup>2</sup> Zirconia

- Translucency of Lithium Disilicate
- Sintering temperature same as regular zirconia
- Single Crowns and 3-Unit Bridges in All Tooth Positions
- Strength of Zirconia
- Conventional Cementation
- Conservative Preparation - 0.8 mm
- Warm, Natural Esthetics
- Flexural Strength of 720 MPa's



\*Flexural Strength Testing per ISO 6872 Specification.



**5+1**

\*FREE Product will be equal or lesser value

## BioZX<sup>2</sup> Zirconia

BioZX2 is high strength, high translucent zirconia for those cases where strength is the first priority and esthetics are still important. BioZX2 is made in Germany under exacting conditions by Dental Direkt, one of the world leaders in the processing and fabrication of zirconia ([www.dentaldirekt.com](http://www.dentaldirekt.com)).

Available in 98.5mm discs.

**5+1**



\*FREE Product will be equal or lesser value

## Ruthinium CAD/CAM DISCS

PMMA discs for fabrication of longer lasting crown and bridges, manufactured with high molecular cross linked acrylic which guarantees high detailed precision and resistance.

### Advantages:

- High milling reproduction details
- Absence of cracks even on thinner layers
- Resistance to abrasion
- Fluorescence
- Burns out completely
- Chromatic stability and absence of porosity
- Biocompatibility



**5+3**

Wow!

\*FREE Product will be equal or lesser value

	RUTHINIUM DISC SINGLE LAYER	RUTHINIUM DISC MULTILAYER
<b>Shades</b>	A1 - A2 - A3 - A3.5 - B1 - B2 - C3 PINK - TRANSPARENT - RX	A1 - A2 - A3 - A3.5 - B1 - B2 - C3
<b>Code</b>	7900087	7900088
<b>Diameter</b>	98.5MM	
<b>Thickness</b>	16 mm - 20 mm - 25 mm	
<b>Price</b>	<b>\$90.00</b>	<b>\$135.00</b>

## EDENTA - TC Carbide Burs

Singles

**5+1**



\*FREE Product will be equal or lesser value

## EDENTA - EXA Technique

3 STEP - Silicone polishing system suitable for denture and orthodontic acrylics.

GREEN - Coarse (Removes Scratches)  
GREY - Medium (Prepares for High Shine)  
YELLOW - Fine (For High Shine)

**5+1**

Package of (6)



\*FREE Product will be equal or lesser value

## EDENTA - EXA Cerapol Polishers

2 STEP - Finishing and Polishing system. Suitable for all partial porcelain and full crown restorations.



GREY - Pre Buff  
PINK - For High Shine

**5+1**

Package of (12) or (100)

\*FREE Product will be equal or lesser value

## EDENTA - White Tiger Diamonds



Patented LLD bond and multi-layered diamond veneer. For high cutting performance thus ensuring minimum heat generation when cutting.

**5+1**

Package of (3)



Excellent  
for Zirconia!

\*FREE Product will be equal or lesser value

## DENTSPLY Aquasil Ultra

**4+1**



## DENTSPLY Lucitone 199

Purchase 25lb. &  
Receive **FREE** Liquid  
Plus a choice of a  
**FREE Gift:**

Special Price  
**\$995**



Apple TV or **Beats by Dre urBeats**



## DENTSPLY Enterra VLC Unit

Purchase Enterra VLC  
Unit & Receive a **FREE**  
Eclipse Starter Kit &  
Electric Wax Pencil Pro!

Valued at  
**\$508<sup>27</sup>**



\$1,500

BUY \$1,500 in REMOVABLE PRODUCTS\*  
Trubyte Teeth, Acrylics and Resins,

RECEIVE **CHOICE OF A FREE GIFT!**

- APPLE TV
- IPOD NANO (16 GB)
- BOSE SOUNDLINK COLOUR BLUETOOTH SPEAKER





**GC EXA or EXA-Lence Products 4 + 1 FREE!**

### Fujirock EP



**BUY 3 of ANY FUJIROCK EP (Any size and colour) GET 1 FREE!**



### Nature-Cryl



**BUY ANY NATURE-CRYL ACRYLICS (Any size) GET CORRESPONDING LIQUID FREE!**

## GC Initial LiSi COURSE

### GC Initial™ LiSi: The New Ceramic for Lithium Disilicate Substructures

- *Learn about Individual layering and cut back technique using CG Initial Lisi. Perfect for Lithium Disilicate Substructures.*
- *Cusomize restorations with GC Initial lustre paste NF system.*

### GC Initial Lisi



**\$44<sup>98</sup>** 20g Bottle

**Location:** Central Dental Ltd.  
**Date:** Friday, November 11th, 2016  
**Time:** 9am - 5pm  
**Registration:** <http://conta.cc/1qmOTCU>  
 Or contact Toni Cusimano at (800) 323-7063, ext. 3006  
**7 Continuing Education Credits**  
 (Must attend the entire day)  
 Registration Fee: \$150.00

# visio.lign

**Strong · Maintainable · Modern**

The visio.lign system uses modern polymer and photo-ceramic materials to replace porcelain or denture teeth and acrylic on various fixed hybrid denture designs.

**Visio.lign means:**

- Unique veneering system
- Stain resistant and hygienic
- Beautiful esthetics
- 100% repairable in-mouth
- Easy and fast
- A shock-absorbing superstructure that protects implants and underlying sub-structures.



## The visio.lign Esthetic System for Fixed Hybrid Dentures: Hands-on Course

- Learn how to use the visio.lign esthetic system for “All On” type cases
- Case planning and preparation
- Framework material choice and design considerations; when should you use titanium, zirconia or polymers?
- Dependable bonding of novo.lign veneered teeth to the framework
- Use of the crea.lign composite materials for life-like gingival and tooth reproduction

2016 Dates: Friday Sep 30<sup>th</sup>, 2016 Toronto  
Friday Nov 4<sup>th</sup>, 2016 Edmonton  
Time: 8:30 am to 4:30 pm

2017 Dates: Friday Jan 20<sup>th</sup>, 2017 Toronto  
Time: 8:30 am to 4:30 pm

**Lunch and light snacks provided.**

**Participants  
Limited to Ten!**

Location: Central Dental Ltd. 3420 Pharmacy Avenue Scarborough, M1W 2P7 Ontario, Canada

**Fee: \$559 per person plus HST.**

**Fee includes implant components for model & case work.**

**Fees non-refundable for cancellations made within one week of the course.**

To Register Contact: Dominic Babinski

Phone 647-203-6975 Email [dombabinski@centraldentalltd.com](mailto:dombabinski@centraldentalltd.com)

bredent group

# Bredent Attachment System

The perfect solution for all prosthetic situations



**FALL**  
**Stock up SALE!**  
 Buy \$500 of Attachments on 1 Invoice and Receive a **\$100** GIFT CARD

## visio.lign Red-white aesthetic set

crea.lign composite set for quick and easy red-white customisation of plastic prostheses and bridges (zirconium/metal/high-performance polymer frameworks).



### Red-white aesthetic set (kit)

REF: CLIGNSETG

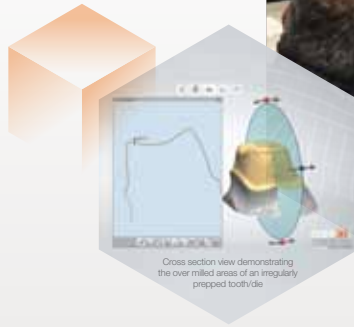
- Crea.lign gel lila (5g)
- Crea.lign gel light (5g)
- Crea.lign gel pink (5g)
- Crea.lign gel rosa (5g)
- Crea.lign gel red (5g)
- Crea.lign transpa clear (5g)
- Crea.lign beige modifier (5g)
- Crea.lign paste GUM PD (3g)
- Crea.lign paste GUM PL (3g)
- Crea.lign opaquer GUM (4g)
- Crea.lign modelling liquid (10ml)
- Visiolink primer (10ml)
- Unique brush #4
- Rotary piston for paste (x2)
- UV-LED dispenser for gels and modifiers
- Application cannulas and protective caps (x10)
- Mixing pad
- Application guide

**Save \$100**

**\$575<sup>00</sup>**

Reg. \$675.00

bredent group



Cross section view demonstrating the over milled areas of an irregularly prepped tooth/de



Only \$99.00 for all three courses

Call 1-877-308-7717 to register today!

3 CE credits available!



## COURSE PROGRAMS

Time: Registration 7:30am  
Course time: 8:00am – 4:00pm  
Locations: Venues TBA  
Cost: \$695.00  
(Most forms of payment accepted)  
Class Size Limited to 20 Attendees

## ONLINE PROGRAMS

### Digital Dentistry Certification Program

#### Unit 1: A Beginner's Guide

Here's a schedule-friendly way to advance your digital dentistry career! Delivered in a convenient three webinar format, Core3daCADemy's comprehensive three-part Digital Dentistry Certification program takes just a few hours to complete but can make all the difference in attaining the flawless results you, and your laboratory, are striving to achieve.

- Digital Dentistry 101 – The Basics
- Digital Dentistry 102 – Scanning with ease
- Digital Dentistry 103 – Effective Digital Design

#### Unit 2: Digital Crown & Bridge Techniques

Accelerate Productivity and Performance! Learn the ins and outs of more effective and efficient Digital Crown and Bridge Design in this new Digital Dentistry Certification Program from Core3daCADemy!

- Crown and Bridge 101 - Single Unit Design
- Crown and Bridge 102 - Designing Multiple Units
- Crown and Bridge 103 - Designing Bridges

**Dates:** October 19th 2016, November 16th 2016

**Time:** All webinars will take place at 12:00 Noon EST, 10:00 AM MST, 9:00 AM PST

Visit our website to see descriptions of upcoming webinars.

Core3dcentres Canada  
InfoCDA@core3dcentres-na.com

or visit us at:  
www.core3dcentres.com



Accuracies & Efficiencies in 3Shape  
Calgary November 18th -19th

Digital Abutment and Implant Bar/Bridge Design  
Vegas September 23rd - 24th

Advanced Cosmetics & Customization in 3Shape  
Toronto October 28th - 29th & Vegas November 4th - 5th

### YOUR TUITION FEE INCLUDES

- Breakfast and Lunch both days
- Two days of Comprehensive Hands-on Education
- 16 Units of Continuing Education Credits
- Three-Month Subscription to Brightsquid's Dental Link Secure-Mail™
- One Complimentary Full Contour Zirconia Crown [a \$65 value]
- One Core3dcentres Scan Body
- Certificate of Completion
- Discounts on additional Core3daCADemy Courses

**Call 1-877-308-7717 to register TODAY Space is limited.**

